

## LYMPHOID NEOPLASIA

Integrin  $\alpha\nu\beta 3$  acting as membrane receptor for thyroid hormones mediates angiogenesis in malignant T cells

Florencia Cayrol,<sup>1</sup> María Celeste Díaz Flaqué,<sup>1</sup> Tharu Fernando,<sup>2</sup> Shao Ning Yang,<sup>2</sup> Helena Andrea Sterle,<sup>1</sup> Marcela Bolontrade,<sup>3</sup> Mariana Amorós,<sup>3</sup> Blanca Isse,<sup>4</sup> Ricardo Norberto Farías,<sup>4</sup> Haelee Ahn,<sup>2</sup> Ye F. Tian,<sup>5</sup> Fabrizio Tabbò,<sup>6</sup> Ankur Singh,<sup>5</sup> Giorgio Inghirami,<sup>6</sup> Leandro Cerchietti,<sup>2</sup> and Graciela Alicia Cremaschi<sup>1,7</sup>

<sup>1</sup>Neuroimmunomodulation and Molecular Oncology Department, Institute for Biomedical Research (BIOMED), National Research Council of Argentina (CONICET), Catholic University of Argentina (UCA), Buenos Aires, Argentina; <sup>2</sup>Division of Hematology and Oncology, Department of Medicine, Weill Cornell Medical College, Cornell University, New York, NY; <sup>3</sup>Laboratory of Molecular and Cellular Therapy, Foundation Institute Leloir-IBBA, Buenos Aires, Argentina; <sup>4</sup>Department of Nutritional Biochemistry, CONICET, National University of Tucumán, and Institute of Biological Chemistry "Dr Bernabé Bloj," San Miguel de Tucumán, Tucumán, Argentina; <sup>5</sup>Sibley School of Mechanical and Aerospace Engineering, Cornell University, Ithaca, NY; <sup>6</sup>Department of Pathology and Laboratory Medicine, Weill Cornell Medical College, Cornell University, New York, NY; and <sup>7</sup>Radioisotope Laboratory, School of Pharmacy and Biochemistry, University of Buenos Aires, Buenos Aires, Argentina

## Key Points

- We elucidate a molecular mechanism by which thyroid hormones sustain TCL survival.
- We demonstrate that the membrane receptor of THs, integrin  $\alpha\nu\beta 3$ , constitutes a potential target for TCL.

The interaction of lymphoid tumor cells with components of the extracellular matrix via integrin  $\alpha\nu\beta 3$  allows tumor survival and growth. This integrin was demonstrated to be the membrane receptor for thyroid hormones (THs) in several tissues. We found that THs, acting as soluble integrin  $\alpha\nu\beta 3$  ligands, activated growth-related signaling pathways in T-cell lymphomas (TCLs). Specifically, TH-activated  $\alpha\nu\beta 3$  integrin signaling promoted TCL proliferation and angiogenesis, in part, via the upregulation of vascular endothelial growth factor (VEGF). Consequently, genetic or pharmacologic inhibition of integrin  $\alpha\nu\beta 3$  decreased VEGF production and induced TCL cell death in vitro and in human xenograft models. In sum, we show that integrin  $\alpha\nu\beta 3$  transduces prosurvival signals into TCL nuclei, suggesting a novel mechanism for the endocrine modulation of TCL pathophysiology. Targeting this mechanism could constitute an effective and potentially low-toxicity chemotherapy-free treatment of TCL patients. (*Blood*. 2015;125(5):841-851)

## Introduction

T-cell lymphomas (TCLs) are a molecular and clinical heterogeneous group of lymphoproliferative disorders broadly classified according to their origin into T-cell lymphoblastic lymphoma (from precursor T cells) and peripheral TCLs (PTCL) (from mature T cells).<sup>1</sup> Among the later, the most common varieties are the nodal types, including PTCL not otherwise specified (PTCL-NOS), anaplastic large-cell lymphoma (ALCL), and angioimmunoblastic TCL (AITL). Although some subtypes may follow a more benign prolonged course, the vast majority of PTCL patients have poor prognoses due to the combination of an aggressive clinical course and the lack of specific treatments originally designed for B-cell lymphomas.<sup>2-4</sup>

The cellular microenvironment plays an essential role in the pathogenesis and progression of lymphomas.<sup>5,6</sup> The interaction of lymphoma cells with ligand molecules in the extracellular matrix (ECM) is responsible for the colonization of specific anatomical sites as well as for lymphoma-cell survival and aggressiveness.<sup>6</sup> The principal ECM receptors are integrins that mediate cell attachment to other cells and the ECM. Engagement of integrins by ECM ligands induces a variety of intracellular signals that regulate migration, differentiation,

proliferation, and apoptosis. Altered integrin expression or signaling is frequently associated with lymphoma-cell invasion and growth.<sup>7</sup>

Integrins are  $\alpha/\beta$  heterodimers with different ligand specificity. Integrin  $\alpha\nu\beta 3$ , expressed in malignant cells, osteoclasts, and dividing endothelial and vascular smooth muscle cells,<sup>8</sup> binds ECM components (eg, vitronectin) and is also the membrane receptor for thyroid hormones (THs).<sup>9-11</sup> Therefore, THs exert their biological actions through simultaneous binding of nuclear receptors and integrin  $\alpha\nu\beta 3$ . TH-induced activation of integrin  $\alpha\nu\beta 3$  triggers a signaling cascade that modulates the transcription of a set of genes that will complement the nuclear-initiated program.<sup>10-12</sup> We recently demonstrated that physiological levels of THs can stimulate the proliferation of murine TCLs through complementary intracellular pathways involving nuclear and membrane receptors, ultimately leading to protein kinase C, extracellular signal-regulated kinase 1/2 (ERK1/2), and nuclear factor  $\kappa$ B (NF- $\kappa$ B) activation.<sup>13,14</sup> In this context, a hypothyroid state would be beneficial for TCL patients; however, this strategy is associated with potentially harmful effects that preclude its clinical application. We hypothesized that targeting integrin  $\alpha\nu\beta 3$  could help to overcome this

Submitted July 13, 2014; accepted November 27, 2014. Prepublished online as *Blood* First Edition paper, December 8, 2014; DOI 10.1182/blood-2014-07-587337.

L.C. and G.A.C. contributed equally to this study.

The online version of this article contains a data supplement.

The publication costs of this article were defrayed in part by page charge payment. Therefore, and solely to indicate this fact, this article is hereby marked "advertisement" in accordance with 18 USC section 1734.

© 2015 by The American Society of Hematology

limitation; however, the mechanistic contributions of integrin  $\alpha\beta3$  to human TCL survival are unknown.

Herein, we characterize the role of TH-induced integrin  $\alpha\beta3$  activation in the survival of malignant T cells. We determine the signaling and transcriptional program triggered by TH binding to integrin  $\alpha\beta3$  on TCLs leading to increase proliferation and angiogenesis. We also demonstrate that targeting integrin  $\alpha\beta3$  is sufficient to induce lymphoma regression in vivo.

## Methods

### TCL cell lines and primary samples

Jurkat and CUTLL1 immature TCL/leukemia cells were obtained from Dr Roxana Schillaci (Instituto de Biología y Medicina Experimental, CONICET, Argentina) and Dr Adolfo Ferrando (Columbia University, New York, NY), respectively; MJ, HuT78, and Mac2A were obtained from the American Type Culture Collection; Karpas299 and SUDHL1 were obtained from the DMSZ; and OCI-Ly12 and OCI-Ly13.2 were obtained from the Ontario Cancer Institute, Canada. Cells were cultured in RPMI 1640 medium, supplemented with 10% fetal bovine serum, 2 mM glutamine, and antibiotics (from Invitrogen). We conducted monthly tests for *Mycoplasma* sp. and other contaminants and quarterly cell identification by single-nucleotide polymorphism. Primary samples were obtained from the Weill Cornell Medical College Biobank under institutional review board approval 0107004999A006.

### Tissue culture treatments

Cell lines were treated at different times with free or agarose-bound hormones at physiological concentration (T3 or T3-AG = 1 nM; T4 or T4-AG = 100 nM; Sigma-Aldrich). For [<sup>3</sup>H]-TdR incorporation and migration assays, cells were synchronized by 12-hour serum starvation (in RPMI) as published previously.<sup>13</sup> For all other experimental procedures, cells were cultured 24 hours before treatments in RPMI with 10% TH-depleted serum (Sunny-Laboratory).

### Human TCL xenograft models

Experiments involving animals were approved by the Institutional Animal Care and Use Committee of Weill Cornell Medical College. For human cell line xenografts, female and male severe combined immunodeficiency (SCID) (NOD.CB17-Prkdc<sup>scid</sup>/J) mice 6 to 10 weeks old were obtained from Taconic Farms. A cohort of mice was subcutaneously injected in the left flank with  $2 \times 10^7$  CUTLL1 cells previously transfected with small interfering RNA (siRNA) against *ITGAV*, *ITGB3*, or noncoding sequence. Another cohort of mice was subcutaneously injected in the left flank with  $10^7$  OCI-Ly12 cells. Tumor volume was measured every other day for the duration of the experiment, and the area under the tumor growth curve (AUC) was calculated. When OCI-Ly12 xenografts reached a palpable size (~75 to 100 mm<sup>3</sup>), mice were randomized into 2 treatment arms to receive vehicle (35% PEG300, 5% Tween-80, and 65% dextrose 5% in water) or cilengitide (125 mg/kg per day, MedKoo) by intraperitoneal injection. For patient-derived xenografts, previously established patient-derived tumorgrafts (1 mm<sup>3</sup> blocks) were subcutaneously expanded into NSG (NOD.Cg-Prkdc<sup>scid</sup> Il2rgtm1Wjl/SzJ) mice 6 to 8 weeks old obtained from our own colony. Tumor assessment and treatments were done as before. Mice from both models were weighed every other day and killed by cervical dislocation under anesthesia when at least 20% of tumors reached 20 mm in any dimension. At the end of the experiment, tumor and other tissues were harvested, weighed, and macroscopically examined for signs of tissue damage.

### Statistical analysis

Means of the different experimental groups were analyzed for statistical significance with the software GraphPad PRISM 4.0 (GraphPad Software), using unpaired 2-tailed Student *t* test or 2-way analysis of variance followed by Tukey's analysis. Differences between means were considered significant if  $P < .05$ . Results are expressed as mean  $\pm$  standard error of the mean (SEM). Correlation

results from patient samples were analyzed using Pearson test for sampled Gaussian populations (2 tailed) and Spearman test for nonparametric correlation (*VEGFA* vs *ITGAV* in ALCL patients samples).

Additional methods are described in supplemental Materials and methods (available on the *Blood* Web site).

## Results

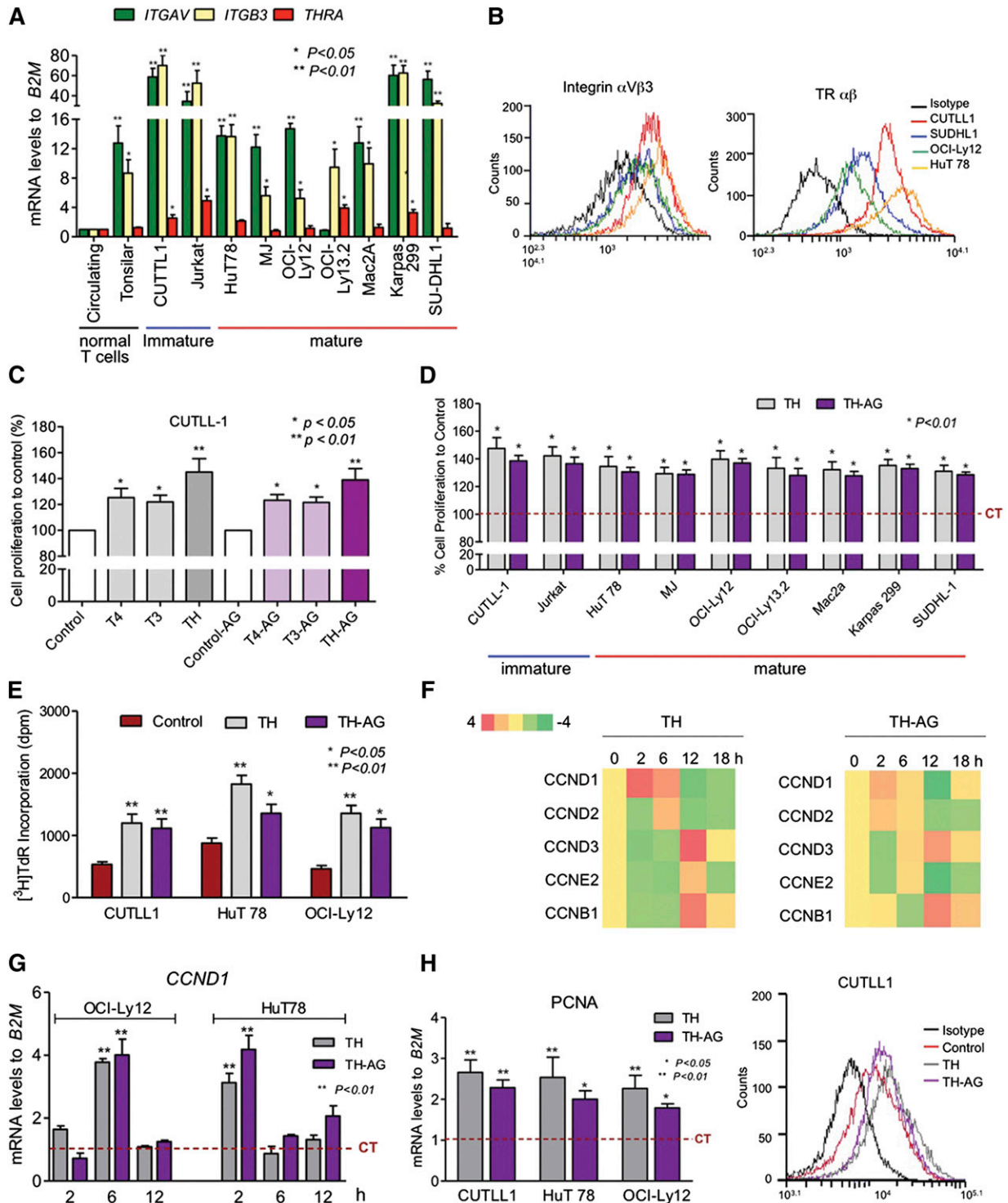
### TCLs express canonical and noncanonical TH receptors

We demonstrated that THs induce murine TCL proliferation in vitro<sup>13,14</sup> by activating both nuclear and membrane receptors. To determine whether THs also contribute to maintaining proliferation in human malignant T cells, we first characterized the expression of nuclear TR $\alpha$  and TR $\beta$ , and the putative membrane integrin  $\alpha\beta3$  receptors, in a panel of TCL cell lines. This panel included immature TCL/leukemia (Jurkat and CUTLL1) and mature TCLs comprising the cutaneous TCL cell lines MJ and HuT78, the PTCL-NOS cell line OCI-Ly12, the ALCL anaplastic lymphoma kinase (ALK)-negative cell lines OCI-Ly13.2 and Mac2a, and the ALCL ALK-positive cell lines Karpas299 and SUDHL1. All these cells expressed *THRA*, *ITGAV*, and *ITGB3* (Figure 1A), but not *THRB*, at similar or higher levels than normal peripheral and tonsillar T cells. TH receptors were also expressed at the protein level as shown for representative cell lines (Figure 1B). This suggests that integrins and nuclear TH receptors are functional to normal and malignant T cells.

### Activation of nuclear and membrane TH receptors induces proliferation of TCLs

We determined the functionality of TH receptors by exposing CUTLL1 cells to physiological concentrations of free and agarose-coupled (cell-impermeable) T3 and T4. Agarose-bound THs bind exclusively to the membrane receptor without binding to nuclear receptors,<sup>9</sup> providing a discriminatory tool to activate exclusively integrin  $\alpha\beta3$ . We found that free and TH-AG hormones significantly increased the proliferation of CUTLL1 cells (Figure 1C). A higher effect was obtained by the combination at physiological dose and ratio of both T3 and T4 or T3-AG and T4-AG compared with each hormone alone (Figure 1C). A similar proliferative effect was found across immature and mature TCL cell lines that showed an increase in proliferative activity ranging from 30% to 50% (Figure 1D).

To further characterize this effect, we measured DNA synthesis and expression of molecular markers of cell-cycle progression in representative immature (CUTLL1) and mature (HuT78 and OCI-Ly12) cells. We found that TH and TH-AG significantly increased DNA synthesis (Figure 1E). This was associated with a cell-cycle progression-dependent induction of cyclins upon hormone addition to arrested cells. An initial increase of D-type cyclins, required for the progression from G0 to G1, was followed by subsequent increase in cyclin E2 (G1 to S and S phase) and cyclin B1 (G2 to M) in CUTLL1 cells exposed to either TH or TH-AG (Figure 1F). A similar pattern for cyclins of the D and E families was found in Hut78 and OCI-Ly12 cells (Figure 1G and supplemental Figure 1A). These effects were also linked to hormone-mediated upregulation of proliferating cell nuclear antigen (PCNA) levels, a central component in DNA synthesis and replication (Figure 1H and supplemental Figure 1B). No induction of apoptosis was found when TCL cells were cultured in the presence or absence of THs (supplemental Figure 1C). Taken together, these data suggest that THs acting through membrane and nuclear receptors constitute proliferative signals for TCLs.



**Figure 1. THs mediate proliferative effects in TCL cell lines.** (A) mRNA levels of *ITGAV*, *ITGB3*, and *THRA* in a panel of TCL cell lines in comparison with mRNA levels in normal T cells. Results shown are the mean  $\pm$  SEM of  $n = 3$  independent experiments. (B) Protein levels of integrin  $\alpha$ V $\beta$ 3 and TR $\alpha$  $\beta$  obtained by flow cytometry in CUTLL1, SUDHL1, OCI-Ly12, and HuT 78 cell lines. Results are representative of  $n = 3$  experiments. (C) CUTLL1 cells treated for 24 hours with free or agarose-bound T3 (1 nM) and T4 (100 nM) or a combination of the same concentrations of both free (TH) or AG-coupled (TH-AG) hormones were evaluated by Cell Titer Blue assay. Results shown represent the percent of proliferative cells respective to CT. (D) Cell proliferation after 24-hour treatment with TH or TH-AG compared with CT (dashed line) in the complete TCL cell line panel. (E) Evaluation of DNA synthesis by  $^3\text{H}$ TdR incorporation of CUTLL1, HuT 78, and OCI-Ly12 cells after 24 hours of hormone treatment vs CT. (F) Cyclin mRNA expression levels in CUTLL1 cells by quantitative reverse-transcription polymerase chain reaction (qRT-PCR) after 2-, 6-, 12-, and 18-hour treatment with TH-AG (right) and free TH (left) compared with CT. (G) Cyclin D1 mRNA expression levels in HuT 78 and OCI-Ly12 cells by qRT-PCR after a 2-, 6-, and 12-hour treatment with TH-AG and free TH compared with CT. (H) PCNA protein levels by flow cytometry in CUTLL1 cells (right) and mRNA (left) levels in CUTLL1, HuT 78, and OCI-Ly12 cells after 24-hour treatment with free TH and AG-bound TH compared with CT. qRT-PCR results shown are the mean  $\pm$  SEM of at least  $n = 3$  independent experiments. For PCNA protein levels, a representative of 4 experiments is displayed. CT, control.



### TH-activated integrin $\alpha\beta3$ dimer sustains TCL proliferation

Physiological levels of THs increase the proliferation of TCLs through membrane and nuclear receptors. However, targeting integrin  $\alpha\beta3$ , instead of TH production or the ubiquitous THRA, would constitute a more feasible anti-lymphoma strategy to translate to patients. The TH binding site on integrin  $\alpha\beta3$  is in close proximity to the Arg-Gly-Asp (RGD) recognition site<sup>9,11</sup>; accordingly, a competing RGD peptide completely abrogated the effect of TH-AG on cell proliferation and decreased a significant fraction of the pro-survival effect of free TH (Figure 2A). In the absence of integrin  $\alpha\beta3$  ligand, the RGD peptide alone had no effect on cell proliferation (Figure 2A). To further validate integrin  $\alpha\beta3$  targeting as a therapeutic strategy in TCL, we transfected CUTLL1 cells with siRNA to integrin  $\alpha$  (si-ITGAV) and/or integrin  $\beta3$  (si-ITGB3) and evaluated THs effect on these conditions vs non-targeting sequence siRNA (si-CT) as control. After 24 and 48 hours, si-ITGAV and si-ITGB3 effectively and selectively (vs other RGD integrins expressed in TCLs) knocked down integrin  $\alpha\beta3$  (Figure 2B and supplemental Figure 2A-B). Both si-ITGAV and si-ITGB3 decreased CUTLL1 cell growth in presence of TH (Figure 2C), suggesting that the heterodimer is necessary for the proliferative effect of TH on TCLs. DNA synthesis analysis demonstrated that, although si-ITGAV, si-ITGB3, and si-ITGAV+si-ITGB3 did not significantly affect CUTLL1 proliferation in the absence of  $\alpha\beta3$  ligand, TH-induced proliferation was completely abrogated (Figure 2D). No differences were observed when both si-ITGAV and si-ITGB3 were used in combination, indicating that downregulation of any of the components impaired the activity of the integrin heterodimer (Figure 2D). The effect of si-ITGAV and si-ITGB3 (vs si-CT) in the mature TCL HuT78 and OCI-Ly12 cells was similar to that with CUTLL1 cells (Figure 2E-F and supplemental Figure 2B), suggesting that the  $\alpha\beta3$  dimer is critical for TH-induced proliferation in most T-cell malignancies.

### TH activates the integrin $\alpha\beta3$ dimer in the presence of ECM ligands

To evaluate the magnitude of TH activity on integrin  $\alpha\beta3$ -mediated proliferation in the presence of its ECM ligand, we cultured TCL cells in the presence of vitronectin. Vitronectin alone had a tendency to increase lymphoma cell proliferation, but to a lesser extent than that observed with THs (Figure 2G). When added together, vitronectin did not compete out the TH effect, and for HuT78 cells, the combination of vitronectin and TH provided a greater proliferative effect than each ligand alone (Figure 2G).

To deeper determine whether the presence of cellular and non-cellular stromal components influences the activation of integrin  $\alpha\beta3$  by TH, as well as the antiproliferative effect of integrin  $\alpha\beta3$  targeting, we developed a tridimensional culture system that mimics cellular and noncellular components of ECM in mature TCLs. We adapted a hydrogel system<sup>15,16</sup> by combining functionalized polyethylene glycol with a crosslinker peptide containing an integrin  $\alpha\beta3$  binding site and a collagenase degradable sequence. As inert stromal cellular component, we used irradiated human tonsil-derived HK follicular dendritic cells (supplemental Figure 3). OCI-Ly12 cells were grown in this culture system in presence and absence of physiological levels of TH and in presence and absence of the specific RGD peptidomimetic integrin  $\alpha\beta3$  inhibitor cilengitide.<sup>17</sup> We measured cell proliferation and clustering by microscopic examination. In these artificial ECM conditions, OCI-Ly12 proliferated between 2 and 3 times more than in regular tissue culture conditions (data not shown). Moreover, in the presence of physiological levels of TH, clustering and proliferation

increased (Figure 2H), suggesting that both RGD stromal components and TH cooperate toward TCL proliferation in conditions that resemble the natural microenvironment of these tumors. Conversely, cilengitide abrogated the clustering and proliferative effect of the artificial ECM and the THs (Figure 2H).

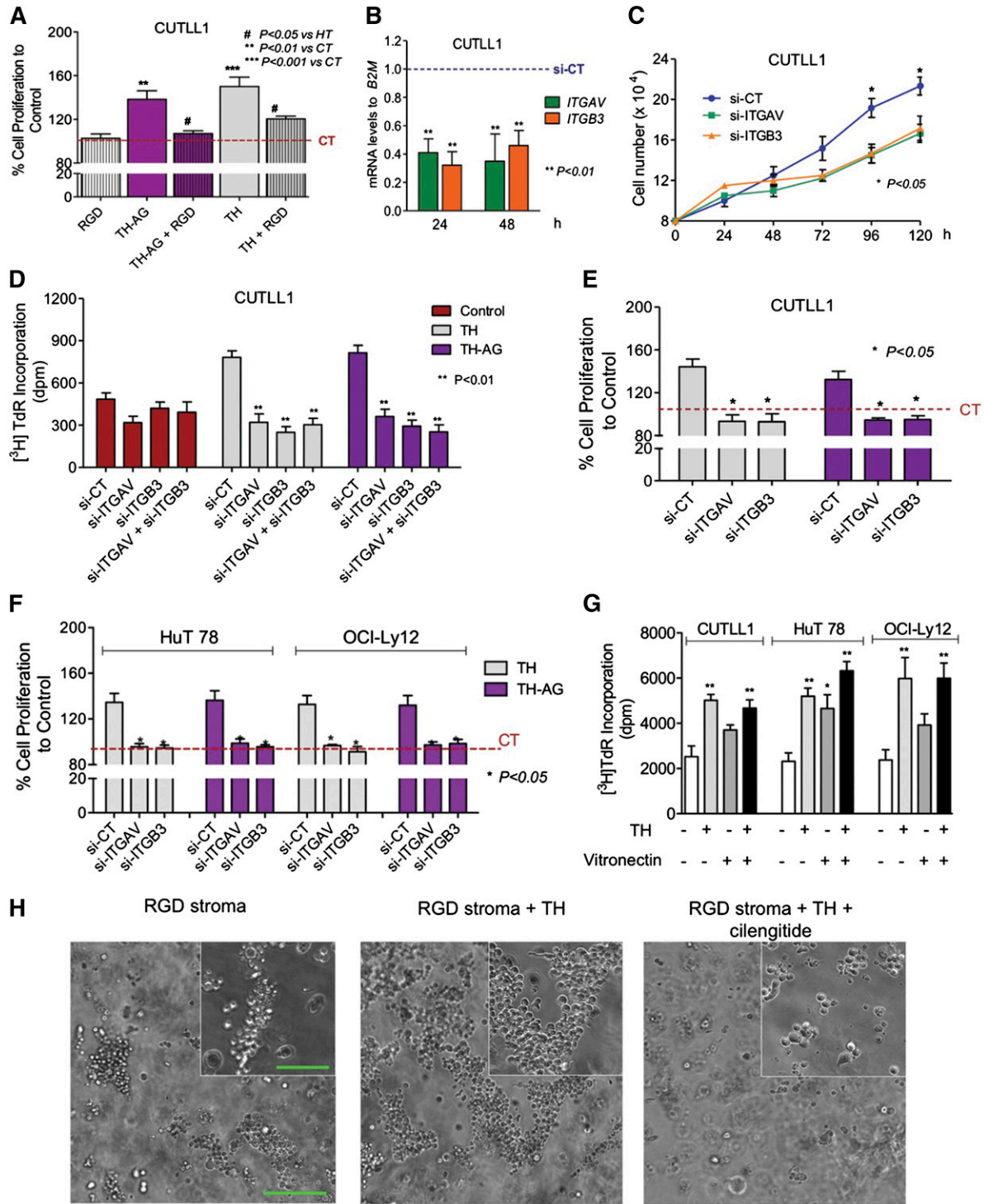
### TH-activated integrin $\alpha\beta3$ regulates pro-survival transcriptional programs

To determine the mechanism by which TH-activated  $\alpha\beta3$  integrins maintain the proliferation of TCLs, we analyzed transcriptional changes induced by TH-AG (vs agarose alone as CT) in CUTLL1 cells by RNA sequencing. We identified 118 upregulated and 5 downregulated transcripts (Figure 3A and supplemental Table 1) involved in “translation” (eg, *RPL13*, *RPL27A*, *RPL36*), “respiratory chain” (eg, *NUDFB1/2*, *NDUFA13*, *UQCRI1*), “angiogenesis” (eg, *VEGFB*), “lymphocyte proliferation/differentiation,” and “DNA replication/transcription” (eg, *DBP*, *IL4*, *EDF1*, *DOK2*) (Figure 3A-B). Previously, we identified ERK1/2 and NF- $\kappa$ B as effectors of TH-activated  $\alpha\beta3$  integrins in murine TCLs.<sup>14</sup> Pathway analysis of these TH-AG-mobilized genes also suggested an association with ERK1/2 and NF- $\kappa$ B (Figure 3B). We therefore validated the up-regulation of genes presenting consensus NF- $\kappa$ B binding sites in their promoter region (ie, *DBP*, *VEGFB*, *IL4*, and *DOK2*) in independent biological experiments. We found that TH-activated  $\alpha\beta3$  integrin signaling upregulated these genes in CUTLL1 cells and in the mature HuT78 and OCI-Ly12 cell lines (Figure 3C). To determine whether free THs could bypass the integrin receptor in upregulating target genes, we analyzed the upregulation of *IL-4* and *VEGFB* by free THs in the presence and absence of integrin  $\alpha\beta3$ . We found that CUTLL1 transfected with either si-ITGAV or si-ITGB3 (vs si-CT) failed to upregulate *IL-4* and *VEGFB* expression upon TH stimulation (Figure 3D). These data indicate that TH-dependent regulation of these genes is due to the activation of  $\alpha\beta3$  and further inhibition of this integrin abrogates this signaling event.

Pathway analysis and our previous findings in murine TCL models<sup>14</sup> suggest that NF- $\kappa$ B mediates downstream of the TH-activated  $\alpha\beta3$  integrin signaling. We now confirm that in human TCLs, TH also induced the activation and therefore nuclear translocation of NF- $\kappa$ B (Figure 3E). Moreover, administration of the specific NF- $\kappa$ B inhibitor BAY-11-7082 significantly abrogated the upregulation of *VEGFB* and *IL4* on both immature (CUTLL1) and mature (HuT78 and OCI-Ly12) TCL cell lines (Figure 3F). BAY-11-7082 alone was unable to decrease *VEGFB* or *IL4* (Figure 3E). This suggests that NF- $\kappa$ B is downstream of TH-activated  $\alpha\beta3$  integrin signaling and regulates the transcription of genes involved in proliferation and angiogenesis.

### TH-activated integrin $\alpha\beta3$ induces VEGF expression and activity

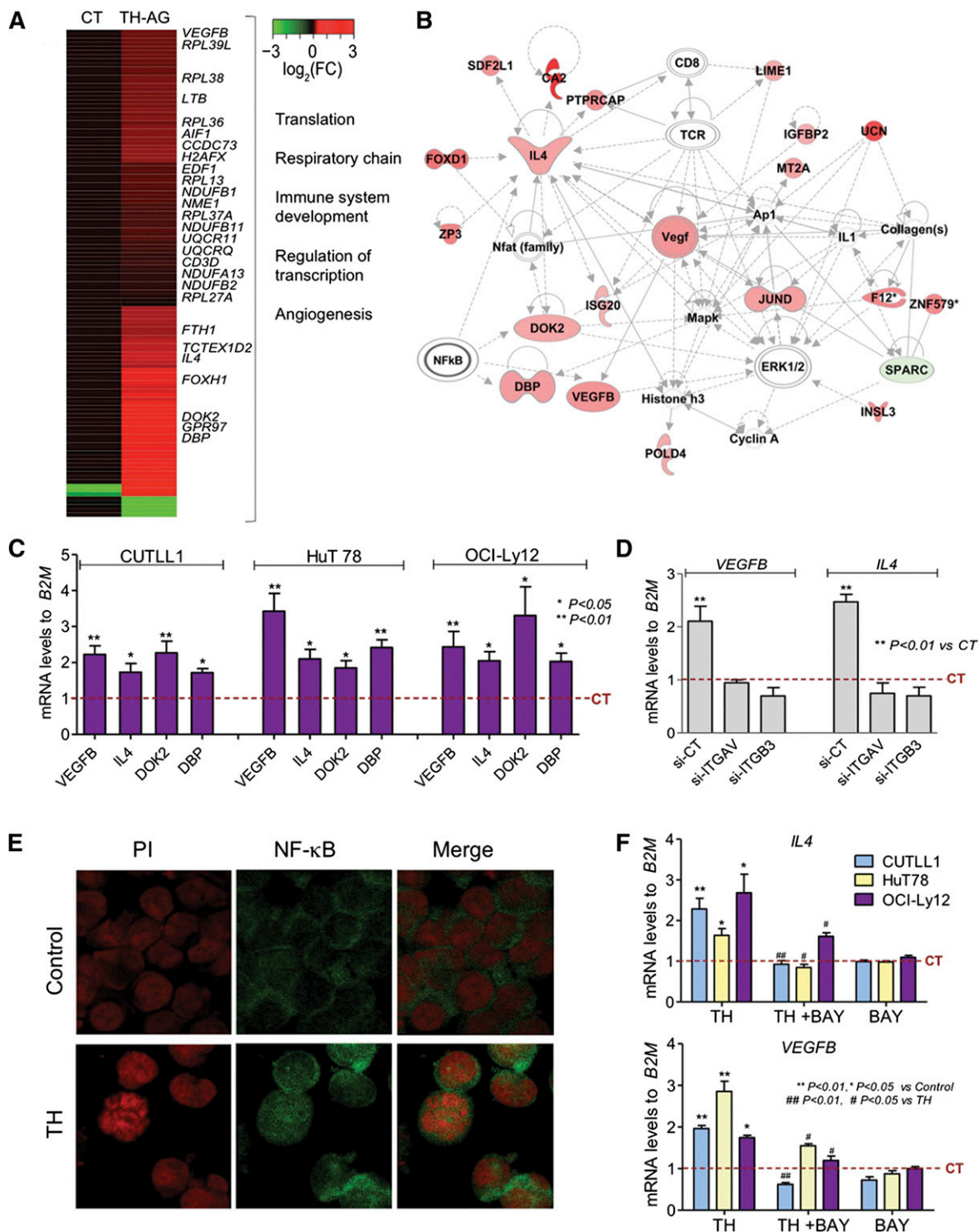
VEGF expression and angiogenesis correlate with survival and prognosis in PTCL-NOS and AITL patients.<sup>18-20</sup> VEGFB is a member of a larger family of growth factors that also includes VEGFA, VEGFC, VEGFD, and PLGF.<sup>21</sup> In addition to *VEGFB*, the only member expressed in samples of a series of TCL patients (74 PTCL-NOS, 30 ALCL-ALK positive, 24 ALCL-ALK negative, and 41 AITL) was *VEGFA* (supplemental Figure 4A). Therefore, we analyzed whether *VEGFA*, like *VEGFB*, was under the control of integrin  $\alpha\beta3$  in TCL. We transfected CUTLL1 cells with either si-ITGAV or si-ITGB3 (vs si-CT) followed by TH stimulation. Similar to *IL-4* and *VEGFB*, *VEGFA* was upregulated upon TH stimulation, exclusively in cells with intact integrin  $\alpha\beta3$  dimer (supplemental Figure 4B), indicating that



**Figure 2. Integrin  $\alpha v \beta 3$  is the membrane receptor for THs in human TCL.** (A) Blockade of the TH-mediated proliferative effect by 1 nM RGD peptide, added 10 minutes before 24-hour hormone treatment, was analyzed by Cell Titer Blue assay. (B) CUTLL1 cells were transfected by electroporation with siRNA against *ITGAV* (si-ITGAV), *ITGB3* (si-ITGB3), or noncoding siRNA as control (si-CT). mRNA levels of target genes were analyzed by qRT-PCR 24 and 48 hours posttransfection. (C) Effect of *ITGAV* and *ITGB3* knockdown on CUTLL1 cell growth by Trypan Blue staining. (D-F) Knockdown of *ITGAV* and/or *ITGB3* abrogates the TH proliferative effect as measured by  $^3\text{H}$ TdR incorporation (D) and cell proliferation by Cell Titer Blue assay (E) after 24 hours of TH treatment in CUTLL1 cells. Similar results were found in mature TCL, HuT 78, and OCI.Ly12 cells (F). (G) Effect of 250 ng/mL vitronectin ligand and/or THs on cell proliferation in CUTLL1, HuT 78, and OCI-Ly12 cells measured by  $^3\text{H}$ TdR incorporation after 24-hour treatment. (H) Growth of OCI-Ly12 cells cultured in an artificial ECM system that offers an RGD ligand, in the presence or absence of physiological levels of TH and in the presence or absence of the inhibitor of integrin  $\alpha v \beta 3$  cilengitide. Cell proliferation and clustering was measured by microscopical examination. Representative photographs (scale bar, 100  $\mu\text{m}$ ) of 4 replicate experiments are shown.

this member is also part of the integrin  $\alpha v \beta 3$ -dependent VEGF family in TCLs. Moreover, NF- $\kappa$ B inhibition using BAY-11-7082 abrogated this effect (supplemental Figure 4C). To determine whether this association was present in our series of TCL patients, we analyzed the

expression of *THRA*, *ITGAV*, and *ITGB3* (supplemental Figure 5A-C) and the correlation between *VEGFA* and *VEGFB* vs *ITGAV* and *ITGB3* (supplemental Figure 5D). We observed a statistically significant positive correlation between *ITGAV* and *ITGB3* with *VEGFB* and *VEGFA*



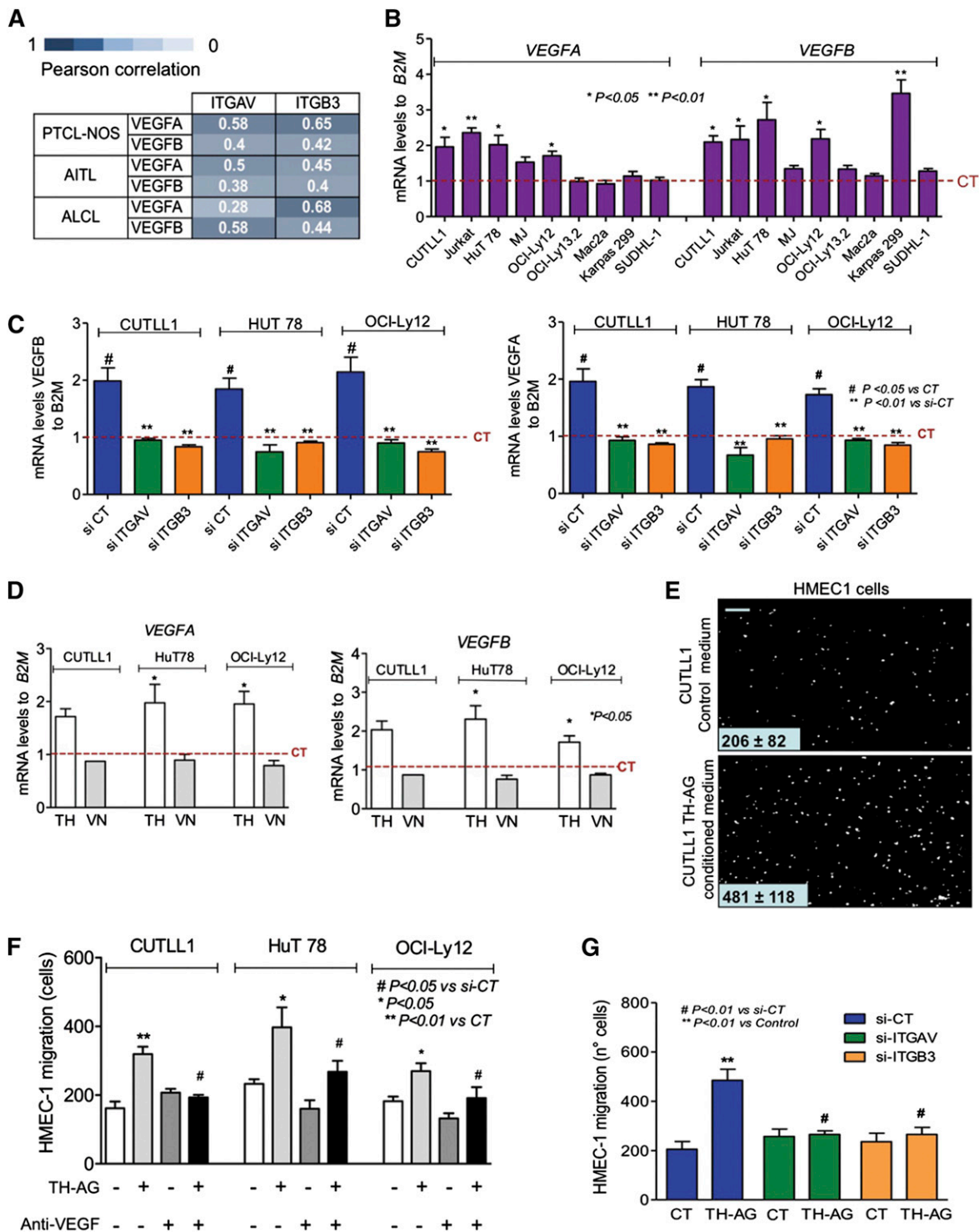
**Figure 3.** THs acting at the membrane receptor initiate a transcriptional program. (A) A graphical heatmap representation of changes ( $\log_2$  fold change) in gene expression of CUTLL1 cells after treatment with TH-AG vs CT (AG alone);  $n = 3$  independent samples for each condition. Selected Gene Ontology categories for upregulated genes are shown on the right. (B) The top network identified by Ingenuity Pathway Analysis on mobilized genes by AG-bound hormones treated cells vs CT. (C) Validation of a select number of genes from the network shown in panel B, 24 hours posttreatment with TH-AG in immature CUTLL1 cells and mature TCL cell lines, HuT 78, and OCI-Ly12. (D) Regulation of *IL-4* and *VEGFB* mRNA levels after 2 hours of treatment with free TH in the presence and absence of integrin  $\alpha v \beta 3$ . (E) NF- $\kappa$ B localization by confocal microscopy of CUTLL1 cells treated or not (Control) with THs for 15 minutes. Representative photographs (scale bar, 20  $\mu\text{m}$ ). (F) Effect of 1  $\mu\text{M}$  of NF $\kappa$ B inhibitor, BAY 11-7082, on TH-mediated regulation of *IL-4* and *VEGFB* genes in CUTLL1, HuT 78, and OCI-Ly12 cells.

in almost all of the TCL subtypes (Figure 4A and supplemental Figure 5D), suggesting a functional association in primary lesions.

VEGFA and VEGFB may contribute to TCL proliferation by 2 mechanisms: one involving the expression of VEGF receptors in TCL

cells (autocrine),<sup>22,23</sup> and another due to sustained angiogenesis through a paracrine effect on the tumor microenvironment.<sup>21</sup> Therefore, a TH-dependent increase of VEGFA and/or VEGFB may promote TCL growth by inducing proliferation of the malignant population as well as

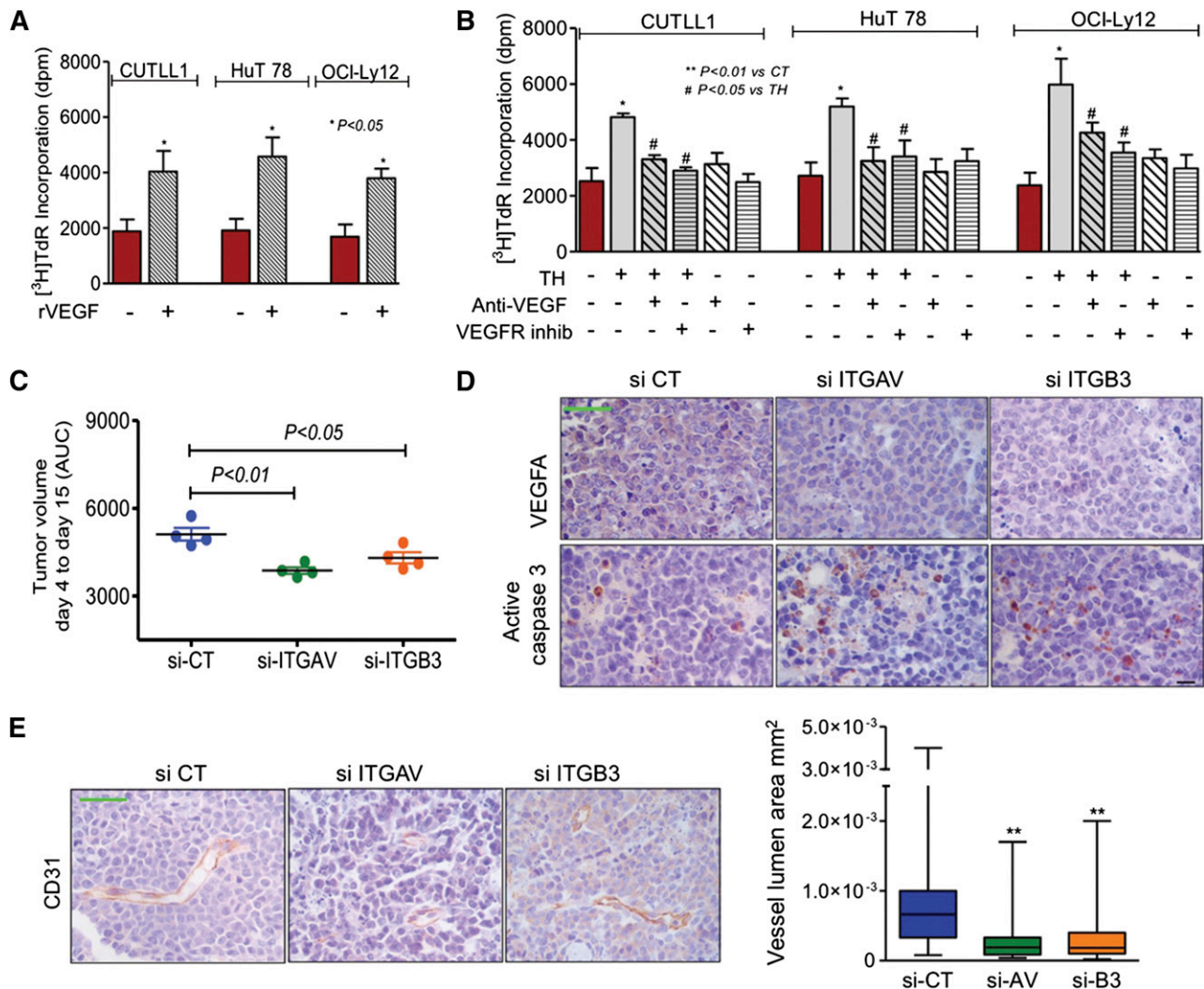




**Figure 4. THs contribute to TCL malignant phenotype through angiogenesis induction.** (A) Pearson correlation between *ITGAV* and *ITGB3* with *VEGFB* and *VEGFA* levels in TCL patients. (B) mRNA levels of *VEGFA* and *VEGFB* in the panel of immature and mature TCLs after 24-hour treatment with TH-AG compared with CT. (C) Transcript abundance of *VEGFA* (right) and *VEGFB* (left) was evaluated in CUTLL1, HuT78, and OCI-Ly12 cell lines transfected for 48 hours with siRNA against *ITGAV* (si-ITGAV), *ITGB3* (si-ITGB3), or noncoding sequence (si-CT) and then treated for 24 hours with TH-AG or agarose alone (as CT). (D) Transcript abundance of *VEGFB* (right) and *VEGFA* (left) was evaluated in CUTLL1, HuT78, and OCI-Ly12 cell lines after 24-hour treatment with 250 ng/mL vitronectin (VN). (E) Induction of HMEC1 cell migration by conditioned medium from CUTLL1 cells treated or not with TH-AG. Representative photographs (scale bar, 60  $\mu$ m) of the endothelial cells that migrate through the chamber membrane in the presence of CT or conditioned medium. (F) Quantitation of HMEC1 cell migration by conditioned medium from CUTLL1, HuT 78, and OCI-Ly12 cells treated or not with TH-AG and preincubated with the anti-VEGF bevacizumab (10  $\mu$ g/mL) vs vehicle. (G) Cell migration quantitation of HMEC1 cells in the presence or absence of conditioned medium from si-RNA-transfected CUTLL1 cells treated with TH-AG vs CT for 24 hours. Mean  $\pm$  SEM of at least 3 independent experiments are shown.

by promoting angiogenesis. To determine the extent of this effect, we first analyzed whether TH-AG could increase the expression of *VEGFB* and *VEGFA* in our panel of malignant T cells. Similarly to CUTLL1,

TH-AG increased *VEGFB* messenger RNA (mRNA) levels in Jurkat, HuT-78, OCI-Ly12, and Karpas299 and increased *VEGFA* in Jurkat, HuT78, MJ, and OCI-Ly12 cells (Figure 4B). This effect was dependent



**Figure 5. Autocrine effect of TH-induced VEGF in TCL proliferation.** (A) TCL proliferation after 24-hour treatment with recombinant VEGF vs CT. (B) DNA synthesis measured by [<sup>3</sup>H]TdR incorporation in CUTLL1, HuT 78, and OCI-Ly12 cells exposed to TH and treated with the anti-VEGF bevacizumab or vehicle and the VEGFR inhibitor axitinib or vehicle. Results shown are the mean  $\pm$  SEM of independent triplicates. (C) CUTLL1 cells were transfected with si-ITGAV, si-ITGB3, or si-CT and injected into SCID mice ( $n = 4$  for each treatment). Tumor growth from day 4 to 15 after implantation was measured by the AUC. (D) Levels of VEGFA and active caspase-3 by immunohistochemistry staining in tissue sections of the tumors obtained from panel A. Representative photographs are shown (scale bar, 50  $\mu$ m). (E) Representative photographs of CD31 staining of tissue sections from the CUTLL1 tumors. Quantification of the blood vessel area (lumen) from the CUTLL1 tumors (right).

on integrin  $\alpha$ v $\beta$ 3, because siRNA to *ITGAV* or *ITGB3* completely abrogated TH-AG-induced upregulation of *VEGFB* and *VEGFA* expression in CUTLL1, HuT-78, and OCI-Ly12 cells (Figure 4C), suggesting that in most TCLs, the expression of VEGF ligands depends on the TH- $\alpha$ v $\beta$ 3 integrin axis activity. Moreover, these effects were not induced by the ECM integrin  $\alpha$ v $\beta$ 3 ligand vitronectin (Figure 4D).

To further characterize the paracrine consequences of TH-induced integrin-dependent VEGF upregulation, we analyzed the effect of a conditioned medium from CUTLL1, HuT78, or OCI-Ly12 cells treated with TH-AG on the migration of endothelial cells, a VEGF-dependent effect. Conditioned medium was placed in the lower compartment of a dual-chamber device separated from the upper compartment containing HMEC1 endothelial cells by a polycarbonate porous membrane. We then quantified the HMEC1 endothelial cells that migrated to the lower compartment and found a significant increase in the number of endothelial cells that migrated to the lower compartment when TH-AG-treated TCL conditioned media was used (Figure 4E-F). To confirm that this effect was VEGF dependent, we conducted this experiment adding the anti-VEGF antibody bevacizumab to HMEC1

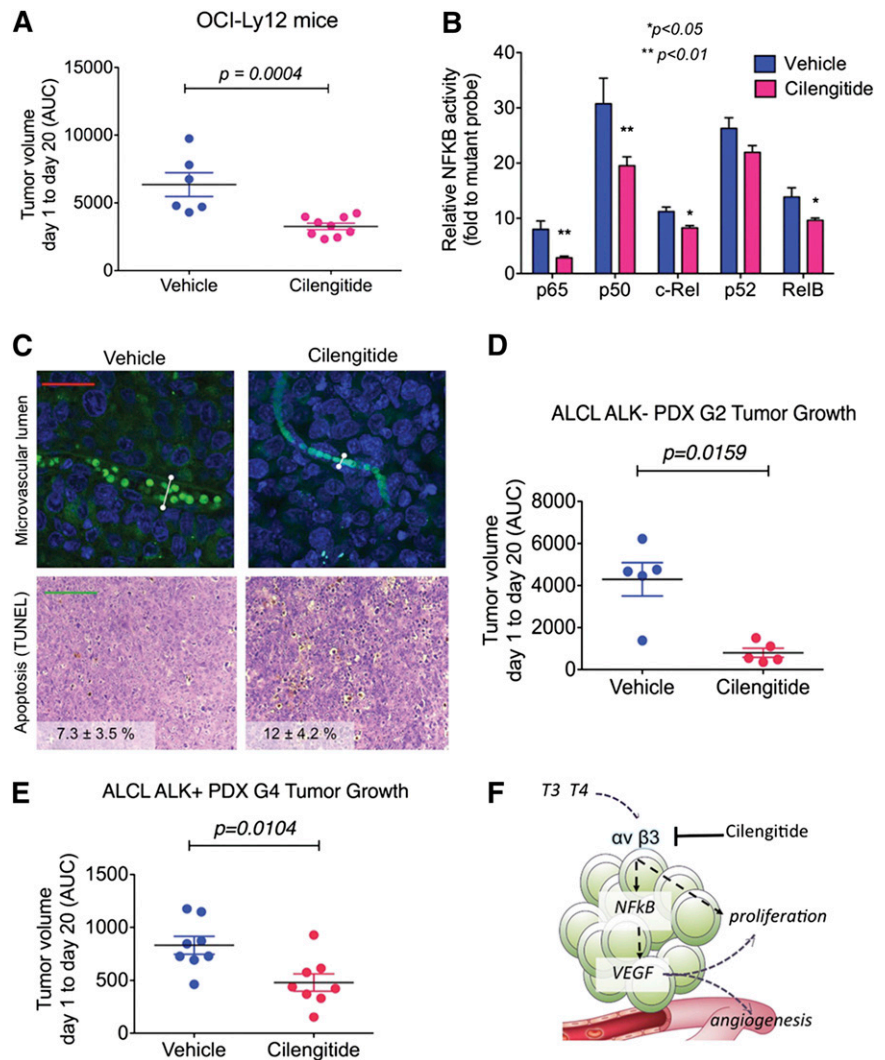
culture medium. We found that anti-VEGF effectively impaired the HMEC1 migration effect of the conditioned media (Figure 4F). Bevacizumab had a negligible effect on the migration of endothelial cells culture with control media (Figure 4F). This suggests that VEGF upregulation leads to a fully functional ligand. Furthermore, this effect was completely abrogated when the conditioned medium was obtained from CUTLL1 cells transfected with siRNA to *ITGAV* or *ITGB3* and treated with TH-AG for 24 hours (Figure 4G and supplemental Figure 6).

#### VEGF mediates TH-induced TCL proliferation

To analyze the possible role of TH-induced VEGF in an autocrine circuit, we first determined the effect of recombinant VEGF on the proliferation of TCL cells. We found that recombinant VEGF induced a significant increase in the proliferation of CUTLL1, HuT78, and OCI-Ly12 cells (Figure 5A). We then evaluated the effect of the anti-VEGF antibody, bevacizumab, and of a specific inhibitor of VEGFR, axitinib, on the proliferative action of TH on these cell lines. Both bevacizumab and axitinib abrogated the proliferation induced by THs in both



**Figure 6. Pharmacologic inhibition of integrin shows anti-lymphoma effect in PTCL-NOS and ALCL mouse models.** (A) Tumor volume (measured by AUC, from day 1 to day 20) in OCI-Ly12 xenografted mice treated with vehicle vs cilengitide. (B) DNA-binding capacity of NF- $\kappa$ B family members assessed by an enzyme-linked immunosorbent assay–based assay in extracted nuclear fractions of disaggregated lymphoma tissues from the tumors obtained in panel A. (C) Microvascular lumen (by intravascular isolectin) and apoptotic bodies (by terminal deoxynucleotidyltransferase-mediated dUTP nick end labeling assay) in representative tissue sections of the tumors from vehicle- and cilengitide-treated OCI-Ly12 mice. Scale bar, 25  $\mu$ m (upper) and 100  $\mu$ m (lower). The white lines show representative maximum lumen size measurements. (D-E) AUC of tumor growth of ALCL ALK-negative (D) and ALCL ALK-positive (E) patient-derived lymphomas in NSG mice treated with vehicle vs cilengitide. (F) Cartoon representation of TH regulation of TCL prosurvival pathways via the activation of  $\alpha v \beta 3$  integrins.



immature and mature TCL cells (Figure 5B), thus indicating that VEGF and VEGFR contribute to the TH-induced proliferation of TCL cells.

We characterized the functional consequences of integrin  $\alpha v \beta 3$  inhibition in vivo in a TCL xenograft model of CUTLL1 cells transfected with si-CT, si-ITGAV, or si-ITGB3. CUTLL1 transfected with either si-ITGAV or si-ITGB3 developed smaller tumors than si-CT-transfected cells (Figure 5C). TCL xenografts from si-ITGAV- or si-ITGB3-transfected cells showed a marked decrease in VEGFA and increase in activated caspase-3 (Figure 5D and supplemental Figure 7). Additionally, CD31 immunostaining of the tumor vasculature revealed an anatomically defective vascularization in these lymphomas (Figure 5E). TCLs from si-ITGAV and si-ITGB3 CUTLL1 cells showed blood vessels with a smaller lumen area (si-ITGAV =  $0.40 \pm 0.12 \times 10^{-3}$ ; si-ITGB3 =  $0.34 \pm 0.08 \times 10^{-3}$  vs si-CT =  $1.07 \pm 0.25 \times 10^{-3}$  mm<sup>2</sup>,  $P < .01$ ), suggesting a diminished angiogenic potential in tumors from cells with either integrin  $\alpha v$  or  $\beta 3$  knockdown. Taken together, these results indicate that THs induce integrin  $\alpha v \beta 3$ -dependent production of fully functional VEGFs with autocrine and paracrine effects.

#### Inhibition of integrin $\alpha v \beta 3$ decreases the proliferation of TCL in vivo

To determine whether this pathway can be therapeutically capitalized upon for the treatment of TCL patients, we assessed the effect of

cilengitide, a selective  $\alpha v \beta 3$  integrin inhibitor currently in clinical use.<sup>17</sup> We developed a PTCL-NOS model by xenografting OCI-Ly12 cells into SCID mice. Once OCI-Ly12 tumors reached a palpable size, we treated them with cilengitide at a dose equivalent to half of the maximum tolerated dose in human patients or vehicle. At the end of the treatment, cilengitide-treated mice showed significantly smaller tumors compared with vehicle-treated CTs ( $P < .001$ ; Figure 6A). This effect was associated with decreased activation of the NF- $\kappa$ B pathway (Figure 6B), decreased microvascular lumen size ( $0.44 \pm 0.22 \times 10^{-3}$  vs  $0.97 \pm 0.55 \times 10^{-3}$  mm<sup>2</sup>, vehicle vs cilengitide, respectively,  $P < .05$ ; Figure 6C, upper) and increased apoptosis ( $7.3 \pm 3.5\%$  vs  $12.0 \pm 4.2\%$ , vehicle vs cilengitide, respectively,  $P < .05$ ; Figure 6C lower). There was no toxicity associated with this treatment as determined by body weight and macroscopic examination of mouse tissue.

To determine the effect of cilengitide in TCLs that more closely resemble the patients' lymphoma heterogeneity and are less manipulated than cells kept in culture, we developed 2 models of patient-derived xenografts. We xenografted ALCL ALK-negative passage 2 lymphomas and ALCL ALK-positive passage 4 lymphomas into NSG mice. Once these tumors reached a palpable size, we treated them with cilengitide or vehicle as before. At the end of the treatment, cilengitide-treated mice showed significantly smaller tumors compared with vehicle-treated CTs ( $P = .0159$  and  $P = .0104$  for ALCL ALK negative and ALCL ALK positive, respectively; Figure 6D-E).

There was no toxicity associated with this treatment as determined by body weight and macroscopic examination of mouse tissue.

## Discussion

Here, we show that physiological concentrations of THs acting through integrin  $\alpha v\beta 3$  induce angiogenesis and proliferation of immature and mature TCL cells. We characterized the transcriptional program triggered upon activation of the integrin  $\alpha v\beta 3$  by TH that is ultimately linked to the induction of angiogenic and cell proliferation genes such as VEGF, an NF- $\kappa$ B–dependent mechanism (Figure 6F). Moreover, we found that pharmacologic inhibition of integrin  $\alpha v\beta 3$  reduces the proliferation of TCLs in preclinical models (Figure 6F), including patient-derived xenografts of ALCL tumors.

Integrin  $\alpha v\beta 3$  is the receptor for ECM proteins including vitronectin, Cyr61, osteopontin, fibronectin, and fibrinogen as well as for soluble factors like THs. TH also binds 1 or more isoforms of a nuclear receptor, TR. Both TH receptors, TR $\alpha$  and the integrin  $\alpha v\beta 3$ , were expressed in TCL cells and patient samples, indicating that they are potentially sensitive to the circulating levels of T3 and T4 normally present in the tumor microenvironment. Moreover, recent data suggested that TCL cells could have an enriched TH microenvironment by a mechanism that involves epigenetic transcriptional control of *DIO3* (type III deiodinase). This enzyme plays an essential role in regulating TH inactivation in tissues, and it was found hypermethylated and repressed in malignant T cells.<sup>24</sup> Transcript analysis of our TCL panel showed undetectable levels of *DIO3* and *DIO2* and low expression of *DIO1* (not shown). Nonetheless, using physiological levels of T3 and T4, we demonstrated that THs are growth factors for TCL. These effects were mediated by free and cell-impermeable hormones and included increments in cell proliferation, metabolism, and cell-cycle induction and progression.

In the characterization of the programs induced by TH on integrin  $\alpha v\beta 3$ , we found genes related to signaling cascades for proliferation and angiogenesis, such as *IL-4*, *DOK2*, and *VEGFB*, that present NF- $\kappa$ B binding sites in their promoter regions. We further confirmed the participation of NF- $\kappa$ B in the signaling cascade triggered upon integrin  $\alpha v\beta 3$  activation. IL-4 is a proliferative cytokine for PTCL<sup>25</sup> and T-cell acute lymphoblastic leukemia cells, in the later through a mammalian target of rapamycin–dependent regulation of cell-cycle progression.<sup>26</sup> The adaptor DOK2, frequently overexpressed in ALCL,<sup>27</sup> acts as a common substrate for multiple tyrosine kinases and induces cell migration, in part, by interacting with integrin  $\beta 3$ .<sup>28</sup> Possibly the most therapeutically actionable finding is the  $\alpha v\beta 3$ -dependent upregulation of VEGFB and VEGFA. Malignant T cells produce and express VEGF receptors, thus supporting autocrine and paracrine VEGF-mediated pathways in lymphangiogenesis.<sup>22,23</sup> VEGF and VEGF receptors are expressed in vascular and lymphoma cells of AILT and PTCL-NOS patients.<sup>20,22,23</sup> Moreover, the expression of VEGF was associated with tumor staging, bone marrow invasion, and prognosis in PTCL-NOS patients.<sup>19</sup> We found that TH-dependent  $\alpha v\beta 3$ -activation increased VEGFB and VEGFA expression and secretion, which in turn activated endothelial cell migration as well as immature and mature TCL proliferation, establishing an autocrine effect. Conversely, anti-VEGF antibody treatment impaired TH-induced endothelial cell migration and lymphoma proliferation.

The proliferative action of THs was abrogated by knockdown of  $\alpha v$  and/or  $\beta 3$  integrins and by an integrin  $\alpha v\beta 3$ -selective

RGD peptidomimetic compound, thus indicating that the heterodimeric integrin  $\alpha v\beta 3$  is sufficient to transduce the proliferative effects of THs. Engagement of integrin  $\alpha v\beta 3$  by the ECM ligand vitronectin did not decrease the TH effect of proliferation. Moreover, in organoid models of TCL, simultaneous activation of integrin  $\alpha v\beta 3$  by RGD-containing ligands and TH resulted in increased proliferation and clustering. Subsequent exposure of these organoids to the integrin  $\alpha v\beta 3$  inhibitor cilengitide<sup>29,30</sup> decreased the proliferation and clustering effect. Furthermore, cilengitide showed anti-lymphoma effect in cell-line–derived and patient-derived xenograft models of mature TCLs. Targeting the integrin  $\alpha v\beta 3$  in TCL and patient-derived xenografts, by either a genomic or a pharmacologic approach, significantly reduced tumor growth, an effect partially mediated by defective angiogenesis. This could represent a potential strategy to test in the clinical setting, because cilengitide is currently being tested in phase 2/3 clinical trials for solid tumors.<sup>30</sup> In this regard, our finding that integrin  $\alpha v\beta 3$  mediates proliferation and survival of TCL would make it an attractive target for therapy, alone or in combination with conventional schedules.

## Acknowledgments

The authors thank Dr Vanina Medina and Mr Jayeshkumar Patel for help with imaging and Alejandra Paulazo for technical assistance.

L.C. is the Raymond and Beverly Sackler Scholar and Scholar of the American Society of Hematology. This work was supported by the National Institutes of Health, National Cancer Institute (R21 CA185236) (L.C. and A.S.), the National Research Council of Argentina (PIP-CONICET 00275) (G.A.C.), the University of Buenos Aires (UBACYT 20020130100289BA) (G.A.C.), the National Agency for Science and Technology (ANPCYT, PICT 20081858) (G.A.C.) (PICT-Raíces 2012-1328) (G.A.C. and L.C.), the Malvin Peace Sevin Research Scholar Award (L.C.), the Irma T. Hirschl Career Scientist Award (L.C.), the Cutaneous Lymphoma Foundation CLARIONS Research Award (L.C.), the Italian Association for Cancer Research Special Program in Clinical Molecular Oncology (5x1000 no. 10007) (G.I.), and the Jorge Oster Award from the Bunge and Born Foundation (F.C.).

## Authorship

Contribution: F.C., L.C., and G.A.C. designed research; F.C., M.C.D.F., S.N.Y., H.A.S., M.A., M.B., F.T., H.A., and Y.F.T. performed experiments; B.I., R.N.F., and G.I. contributed vital reagents and acquired and managed patient samples; F.C., T.F., A.S., L.C., and G.A.C. analyzed and interpreted data and performed statistical analysis; F.C., L.C., and G.A.C. wrote the manuscript; and L.C. and G.A.C. supervised the study.

Conflict-of-interest disclosure: The authors declare no competing financial interests.

Correspondence: Leandro Cerchietti, Weill Cornell College of Medicine, Cornell University, 1300 York Ave, New York, NY 10065; e-mail: lec2010@med.cornell.edu; and Graciela Alicia Cremaschi, Neuroimmunomodulation and Molecular Oncology Department, BIOMED-UCA-CONICET, Avda Alicia Moreau de Justo 1600, 3rd Floor, Buenos Aires, Argentina; e-mail: gacremaschi@gmail.com.

## References

- Armitage JO. The aggressive peripheral T-cell lymphomas: 2013. *Am J Hematol*. 2013;88(10):910-918.
- Foss FM, Zinzani PL, Vose JM, Gascoyne RD, Rosen ST, Tobinai K. Peripheral T-cell lymphoma. *Blood*. 2011;117(25):6756-6767.
- Reddy NM, Evens AM. Chemotherapeutic advancements in peripheral T-cell lymphoma. *Semin Hematol*. 2014;51(1):17-24.
- Skarbnik AP, Burki M, Pro B. Peripheral T-cell lymphomas: a review of current approaches and hopes for the future. *Front Oncol*. 2013;3:138.
- Rosenquist R, Davi F, Ghia P. The microenvironment in lymphomas—dissecting the complex crosstalk between tumor cells and 'by-stander' cells. *Semin Cancer Biol*. 2014;24:1-2.
- Gaulard P, de Leval L. The microenvironment in T-cell lymphomas: emerging themes. *Semin Cancer Biol*. 2014;24:49-60.
- Vacca A, Ria R, Presta M, et al.  $\alpha(v)\beta(3)$  integrin engagement modulates cell adhesion, proliferation, and protease secretion in human lymphoid tumor cells. *Exp Hematol*. 2001;29(8):993-1003.
- Sloan EK, Pouliot N, Stanley KL, et al. Tumor-specific expression of  $\alpha v \beta 3$  integrin promotes spontaneous metastasis of breast cancer to bone. *Breast Cancer Res*. 2006;8(2):R20.
- Bergh JJ, Lin HY, Lansing L, et al. Integrin  $\alpha v \beta 3$  contains a cell surface receptor site for thyroid hormone that is linked to activation of mitogen-activated protein kinase and induction of angiogenesis. *Endocrinology*. 2005;146(7):2864-2871.
- Davis PJ, Davis FB, Mousa SA, Luidens MK, Lin HY. Membrane receptor for thyroid hormone: physiologic and pharmacologic implications. *Annu Rev Pharmacol Toxicol*. 2011;51:99-115.
- Cheng SY, Leonard JL, Davis PJ. Molecular aspects of thyroid hormone actions. *Endocr Rev*. 2010;31(2):139-170.
- Davis PJ. Integrated nongenomic and genomic actions of thyroid hormone on blood vessels. *Curr Opin Endocrinol Diabetes Obes*. 2011;18(5):293-294.
- Barreiro Arcos ML, Gorelik G, Klecha A, Genaro AM, Cremaschi GA. Thyroid hormones increase inducible nitric oxide synthase gene expression downstream from PKC-zeta in murine tumor T lymphocytes. *Am J Physiol Cell Physiol*. 2006;291(2):C327-C336.
- Barreiro Arcos ML, Sterle HA, Paulazo MA, et al. Cooperative nongenomic and genomic actions on thyroid hormone mediated-modulation of T cell proliferation involve up-regulation of thyroid hormone receptor and inducible nitric oxide synthase expression. *J Cell Physiol*. 2011;226(12):3208-3218.
- Patel RG, Purwada A, Cerchielli L, et al. Microscale bioadhesive hydrogel arrays for cell engineering applications. *Cell Mol Bioeng*. 2014;7(3):394-408.
- Singh A, Qin H, Fernandez I, et al. An injectable synthetic immune-priming center mediates efficient T-cell class switching and T-helper 1 response against B cell lymphoma. *J Control Release*. 2011;155(2):184-192.
- Mas-Moruno C, Rechenmacher F, Kessler H. Cilengitide: the first anti-angiogenic small molecule drug candidate design, synthesis and clinical evaluation. *Anticancer Agents Med Chem*. 2010;10(10):753-768.
- Konstantinou K, Yamamoto K, Ishibashi F, et al. Angiogenic mediators of the angiopoietin system are highly expressed by CD10-positive lymphoma cells in angioimmunoblastic T-cell lymphoma. *Br J Haematol*. 2009;144(5):696-704.
- Zhang W, Wang L, Zhou D, Cui Q, Zhao D, Wu Y. Expression of tumor-associated macrophages and vascular endothelial growth factor correlates with poor prognosis of peripheral T-cell lymphoma, not otherwise specified. *Leuk Lymphoma*. 2011;52(1):46-52.
- Jørgensen JM, Sørensen FB, Bendix K, et al. Expression level, tissue distribution pattern, and prognostic impact of vascular endothelial growth factors VEGF and VEGF-C and their receptors Flt-1, KDR, and Flt-4 in different subtypes of non-Hodgkin lymphomas. *Leuk Lymphoma*. 2009;50(10):1647-1660.
- Goel HL, Mercurio AM. VEGF targets the tumour cell. *Nat Rev Cancer*. 2013;13(12):871-882.
- Zhao WL, Mourah S, Mounier N, et al. Vascular endothelial growth factor-A is expressed both on lymphoma cells and endothelial cells in angioimmunoblastic T-cell lymphoma and related to lymphoma progression. *Lab Invest*. 2004;84(11):1512-1519.
- Piccaluga PP, Agostinelli C, Califano A, et al. Gene expression analysis of angioimmunoblastic lymphoma indicates derivation from T follicular helper cells and vascular endothelial growth factor deregulation. *Cancer Res*. 2007;67(22):10703-10710.
- Martin-Subero JI, Ammerpohl O, Bibikova M, et al. A comprehensive microarray-based DNA methylation study of 367 hematological neoplasms. *PLoS ONE*. 2009;4(9):e6986.
- Raziuddin S, Sheikha A, Abu-Eshy S, Al-Janadi M. Regulation of interleukin-4 production and cytokine-induced growth potential in peripheral T-cell non-Hodgkin's lymphomas. *Br J Haematol*. 1998;100(2):310-316.
- Cardoso BA, Martins LR, Santos CI, et al. Interleukin-4 stimulates proliferation and growth of T-cell acute lymphoblastic leukemia cells by activating mTOR signaling. *Leukemia*. 2009;23(1):206-208.
- Lamant L, de Reyniès A, Duplantier MM, et al. Gene-expression profiling of systemic anaplastic large-cell lymphoma reveals differences based on ALK status and two distinct morphologic ALK+ subtypes. *Blood*. 2007;109(5):2156-2164.
- Calderwood DA, Fujioka Y, de Pereda JM, et al. Integrin beta cytoplasmic domain interactions with phosphotyrosine-binding domains: a structural prototype for diversity in integrin signaling. *Proc Natl Acad Sci USA*. 2003;100(5):2272-2277.
- Desgrosellier JS, Cheresh DA. Integrins in cancer: biological implications and therapeutic opportunities. *Nat Rev Cancer*. 2010;10(1):9-22.
- Scaringi C, Minniti G, Caporello P, Enrici RM. Integrin inhibitor cilengitide for the treatment of glioblastoma: a brief overview of current clinical results. *Anticancer Res*. 2012;32(10):4213-4223.





**blood**<sup>®</sup>

2015 125: 841-851

doi:10.1182/blood-2014-07-587337 originally published  
online December 8, 2014

## **Integrin $\alpha v \beta 3$ acting as membrane receptor for thyroid hormones mediates angiogenesis in malignant T cells**

Florencia Cayrol, María Celeste Díaz Flaqué, Tharu Fernando, Shao Ning Yang, Helena Andrea Sterle, Marcela Bolontrade, Mariana Amorós, Blanca Isse, Ricardo Norberto Farías, Haelee Ahn, Ye F. Tian, Fabrizio Tabbò, Ankur Singh, Giorgio Inghirami, Leandro Cerchietti and Graciela Alicia Cremaschi

---

Updated information and services can be found at:

<http://www.bloodjournal.org/content/125/5/841.full.html>

Articles on similar topics can be found in the following Blood collections

[Lymphoid Neoplasia](#) (3039 articles)

---

Information about reproducing this article in parts or in its entirety may be found online at:

[http://www.bloodjournal.org/site/misc/rights.xhtml#repub\\_requests](http://www.bloodjournal.org/site/misc/rights.xhtml#repub_requests)

Information about ordering reprints may be found online at:

<http://www.bloodjournal.org/site/misc/rights.xhtml#reprints>

Information about subscriptions and ASH membership may be found online at:

<http://www.bloodjournal.org/site/subscriptions/index.xhtml>